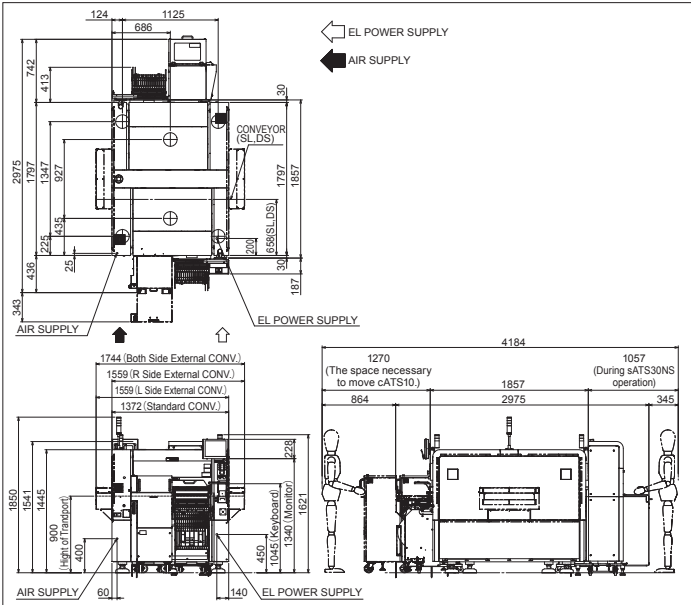


■ Specifications ★ Specifications and appearance are subject to change without prior notice.

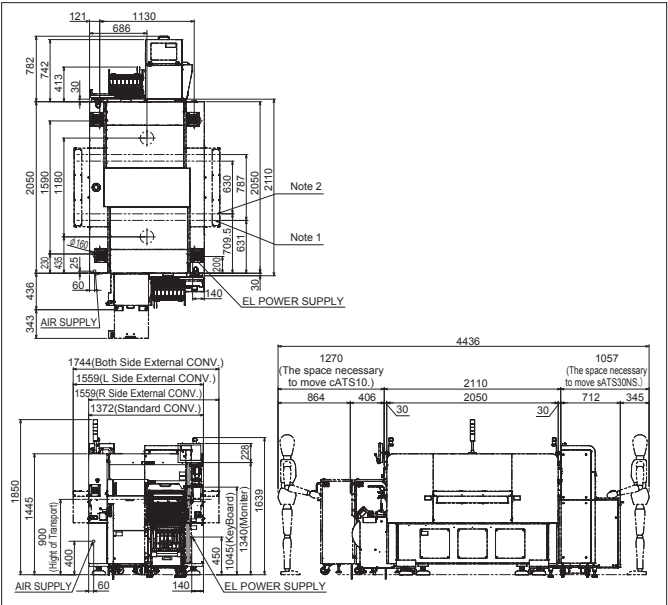
Model	YSM20R TypePV	YSM20R TypeSV	YSM20WR
Applicable PCB	Single lane L810 x W490 to L50 x W50 Dual stage <small>Note : For X-axis 2-beam option only</small> 1PCB conveyance : L810 x W490 to L50 x W50 2PCB conveyance : L380 x W490 to L50 x W50		Dual lane <small>Note 1</small> Same type PCBs : L810 x W356 to L50 x W50 Different type PCBs : up to L810 x W662 <small>Note 2</small> Same type PCB : L810 x W280 to L50 x W50 Different type PCBs : up to L810 x W510
Head / Applicable components	High-Speed Multi (HM) Head <small>Note 3 :</small> 0201 to W55 x L100mm, Height 15mm or less Odd-shaped components (FM : Flexible Multi) head : 03015 to W55 x L100mm, Height 28mm or less	High-Speed Multi (HM) Head : 03015 to W55 x L100mm, Height 15mm or less Odd-shaped components (FM : Flexible Multi) head : 03015 to W55 x L100mm, Height 28mm or less	High-Speed Multi (HM) Head <small>Note 3 :</small> 0201 to W55 x L100mm, Height 15mm or less Odd-shaped components (FM : Flexible Multi) head : 03015 to W55 x L100mm, Height 28mm or less
Mounting capability (under optimum conditions as defined by Yamaha Motor)	X axis 2-beam : High-speed multi-purpose (HM : High-speed Multi) head x 2 95,000CPH	X axis 2-beam : High-speed multi-purpose (HM : High-speed Multi) head x 2 90,000CPH	X axis 2-beam <small>Note 1 :</small> High-speed multi-purpose (HM : High-speed Multi) head x 2 81,000CPH
Mounting accuracy	±0.035mm (±0.025mm) Cpk≥1.0 (3σ) (under optimum conditions as defined by Yamaha Motor when standard evaluation materials are used)		
Number of component Types	Fixed plate : Max. 140 types (conversion for 8mm tape feeder) Feeder carriage exchange : Max. 128 types (conversion for 8mm tape feeder) Trays for 30 types (Fixed type : max., when fitted with sATS30/sATS30NS) and 10 types (Carriage type : max., when fitted with cATS10)		
Power supply	3-Phase AC 200/208/220/240/380/400/416V +/-10% 50/60Hz		
Air supply source	0.45MPa or more, in clean, dry state		
External dimension (excluding projections)	L 1,374 x W 1,857 x H1,445mm (Main unit only)		L 1,374 x W 2,110 x H1,445mm (Main unit only)
Weight	Approx. 2,050kg (Main unit only)		Approx. 2,500kg (Main unit only)

Note 1 : When using conveyor separation specifications of 787mm between 1 to 4 lanes Note 2 : When using conveyor separation specifications of 630mm between 1 to 4 lanes
Note 3 : Please contact us for info regarding mounting 0201 components.

■ YSM20R External dimension

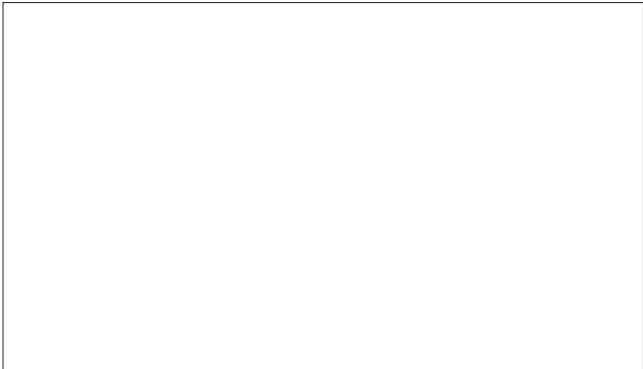


■ YSM20WR External dimension



Note 1 : When using conveyor separation specifications of 787mm between 1 to 4 lanes
Note 2 : When using conveyor separation specifications of 630mm between 1 to 4 lanes

DISTRIBUTOR



● The models shown in the photographs in this catalog may differ slightly from the standard specifications.
● Specifications and appearance are subject to change without prior notice.



YAMAHA MOTOR CO., LTD.

Robotics Operations

127 Toyooka-Kita-ku, Hamamatsu, Shizuoka 433-8103, Japan
Telephone 81-53-525-7061 Facsimile 81-53-525-8351
URL <https://global.yamaha-motor.com/business/smt/>

■ YAMAHA MOTOR IM (SUZHOU) CO., LTD.

Building 3C, Export Processing Zone A, No.200 Suhong
Middle Road, Suzhou Industrial Park, Jiangsu, P.R. China
Telephone 86-512-6831-7091 Facsimile 86-512-6831-7093

■ YAMAHA MOTOR IM (SUZHOU) CO., LTD. Shenzhen Branch

Room A 3/F Xinzhou Building South Xinzhou Road
Futian District Shenzhen Guangdong P.R.C 518038
Telephone 86-755-2393-9910 Facsimile 86-755-2393-9974

■ Bangkok office

64 Moo1, Bangna-Trad Rd., Km.21, Tambol Srisa Jorake Yai,
Amphur Bangsaethong, Samutprakarn 10540, Thailand
Telephone 66-2740-8340 Facsimile 66-2740-0996

■ Hanoi office

G1 Tang Long Industrial Park, Dong Anh, Hanoi, Vietnam
Telephone 84-4-3951-6451 Facsimile 84-4-3951-6461

■ YME (Germany office)

Yamaha Motor Europe N.V.
German Branch Office, IM Business
Hansemannstrasse 12, 41468 Neuss, Germany
Telephone 49-(0)2131-2013 (Ext 520) Facsimile 49-(0)2131-2013 (Ext 529)

■ YMUS (USA office)

Yamaha Motor Corporation, USA IM Division
1270 Chastain Road, Kennesaw, Georgia 30144 USA
Telephone 1-770-420-5825 Facsimile 1-770-420-6043

■ East Japan Sales Office

■ West Japan Sales Office

■ Kyushu Sales Office



SEBMK18100-02(May 2019)



SMT Innovation

Z:LEX YSM20R / YSM20WR

High-End High-Efficiency Modular



SMT Innovation

High-End High-Efficiency Modular

Z:LEX YSM20R / YSM20WR

All-purpose surface mounter with the highest speed in its class brings 1head solution evolution to a whole new level!

The 1-head solution!

Needs no head replacement!
0201 Note **to large-size components**

Note : when using high-speed general-purpose head on YSM20R Type PV / YSM20WR

Ultra-high speed mounting

95,000 CPH (under optimum conditions as defined by Yamaha Motor) (When using YSM20R Type PV)

Handling large PCBs

L810 x W742mm (Supports YSM20WR)

Max. feeder count

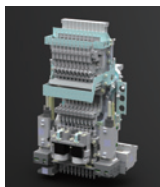
140 types (under fixed specifications: conversion for 8mm tape feeder)



Feature 1 Achieves both a whole new dimension of versatility and high-speed for mounters via the 1-head solution

1-head solution

Two types of heads are available that bring the "1-head solution" to an even higher dimension capable of accommodating a wide range of components while maintaining high speed with no head replacement. High-speed general-purpose heads can be used for ultra-small (0201) chip components.



High-speed multi-purpose (HM : High-speed Multi) head

This universal type head made for high-speed mounting and versatility supports from ultra-tiny chips of 0201 (mm) to large-size components of 55 x 100 mm and height of 15 mm. (When using YSM20R Type PV / YSM20WR)



Odd-shaped components (FM : Flexible Multi) head

Super wide-ranging type head supports load control, and handles a broad spectrum of components from ultra-tiny chips of 03015 (mm), to ultra-large components of 55 x 100 mm and tall components of heights to 28 mm.

Superb mounting performance 95,000 CPH (under optimum conditions as defined by Yamaha Motor)

Improving mounter operation from component pickup to mounting and using high-speed XY axes achieved production of 95,000 CPH which is 5% higher than conventional models. (When using YSM20R Type PV)

Huge improved adaptability to actual production

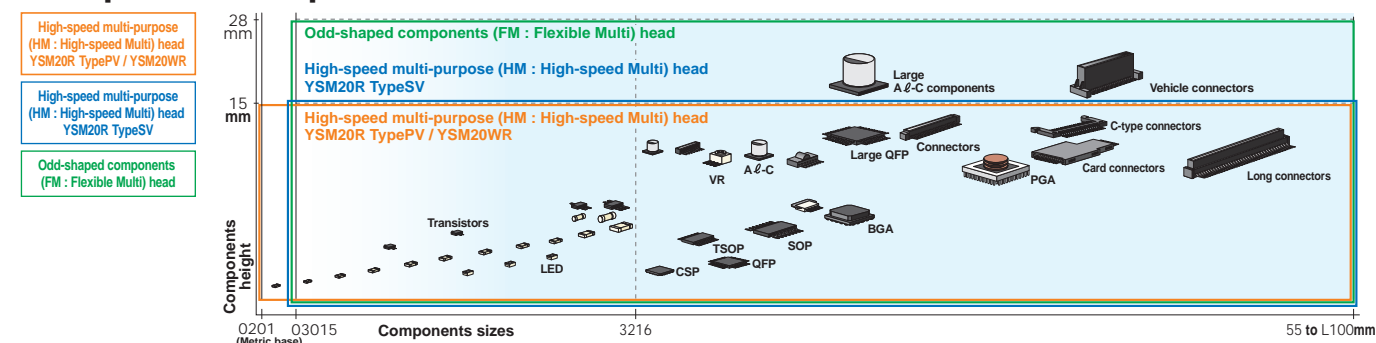
Mounting a new type wide-scan camera increases and expands recognition capability to support high speed mounting of components down to only 0.8 mm to 12 mm in size. Also, use of side lighting gives high-speed recognition of ball electrode components such as CSP (chip scale packages) and BGA (ball grid arrays).

Beam variations available in 2 types

Achieving a common platform allows selecting from 1-beam and 2-beam for configuring the X-axis according to production mode and mounting capability. Note : YSM20WR only supports 2-beam configuration.

Feature 2 Wide support capability turns the concept of "Limitless EXpansion" into a reality!

Compatible components



Conveyors available in freely configurable variations

YSM20R

Conveyor system is selectable from dual stage, single lane. Supports PCB sizes to a max.L810 x W490 mm (Dual stage, single lane for conveying single PCB). Single lane also available in M size specifications (max. PCB size L360 x W490 mm) having superior cost performance.

YSM20WR

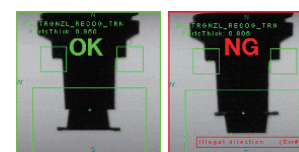
Easily links with Z:TA-R, allowing a configuring a dual-lane line that best matches your production style. (When using conveyor separation specifications of 630mm between 1 to 4 lanes)

	L=810	L=380 L=380	L=810	L=810
	Single lane	Dual stage (2 PCB conveyance)	Dual lane conveyance of 2 boards with Same type PCBs	Dual lane Conveys 2 boards of Different type PCBs
YSM20R	W=490	W=490		
YSM20WR			W=356	W=662

Feature 3 Numerous functions to support high-quality mounting are included as standard features.

Side view function

Detects pickup status and component's presence with no downtime loss.



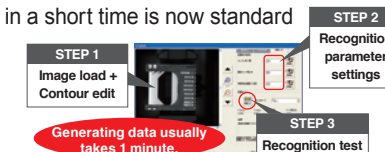
Blow station

Automatic blow cleaning function keeps nozzle clean for long periods.



High-speed smart recognition

Highly robust "High-speed Smart Recognition" that also creates recognition data for custom or unique components in a short time is now standard equipment.



Feature 4 Achieves highly-streamlined components supply

sATS30NS Auto Tray Sequencer (ATS) for nonstop tray replacement

A new function has been added to the sATS30 Auto Tray Sequencer for automatic tray exchange and component feed. This new function automatically ejects pallets with empty trays during operation and feeds pallets with new trays into the machine. Operator can remove the pallet with empty tray and replenish pallet with full tray and press feed button. Pallet will automatic be supplied into the magazine. The magazine can be exchanged during changeover without stopping automatic operation. (Supports YSM20R Type PV / YSM20WR)



sATS30NS

Newly developed and designed ALF (Auto Loading Feeder)

Newly developed ALF, Auto Loading Feeder, can supply tape-mounted components just by inserting a tape without stopping the machine. The unique center open technique from Yamaha drastically reduces components pickup errors that occur from static electricity and the residue when peeled from the tape. No recovery of top tape is needed which vastly increases the operating rate.



Nonstop feeder carriage exchange system

A cover with shutter was mounted on the pickup components of the opening used during carriage clamp and release. The shutter automatically closes when the carriage is detached so that carriages can be exchanged without stopping the machine. This improve the machine productivity. (Supports YSM20R Type PV / YSM20WR)



ZS feeder

Also supports thin, light-weight, compact, single lane type motorized intelligent feeders. Customer can select from non-stop feeder replacement function specs. Specs also support conventional SS feeders.

